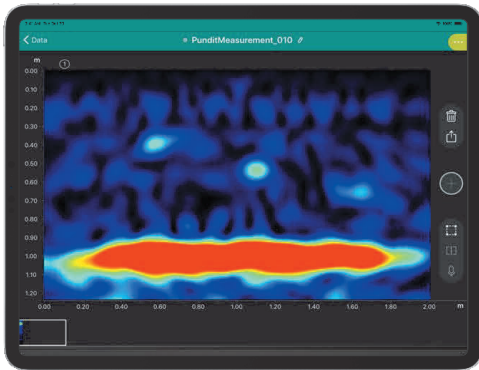


Pundit® Live Array Pro



PD8000

Structural concrete evaluation and imaging using enhanced ultrasonic pulse echo technology



Performance

Unmatched sharpness, precision, stability and depth penetration thanks to revolutionary image focusing paired with sophisticated real-time algorithms.



Future readiness

Extendable probe powered by the future-oriented software smartly complements your Proceq GPR to expand your inspection capabilities.



Productivity

Ultimate peace of mind delivered by on-site A.I.-assisted positioning and data interpretation. Get to your insights fast with immediate visualization, including 3D and AR.

Pundit® Live Array



Pundit® 250 Array



Pundit® PD8000 Basic



Pundit® PD8000 Pro

Visualization features

High definition focus view				•
Local focusing macro view				•
Augmented Reality				•
3D view		•		•
3D view with ColorDepth				•
A.I.-assisted positioning		•		•
A.I.-assisted feature interpretation				•
A.I.-assisted material identification				•
Image stabilization				•
Ultrasonic Pulse Velocity from one Side		•		•

Cloud features

Cloud synchronisation		•		•
Cloud sharing via URL		•		•
Cloud-enabled Logbook		•		•
Cloud-based raw data export		•		•
Cloud-based HTML-data export				•
Cloud-based report generation				•

Measurement modes

Line Scan	•			•
Stripe Scan		•		•
A-scan (incl. envelope)	•	•		•
B-scan (Line view)	•	•		•
C-scan (Time-slice view)		•		•

Applications

Depth range	Up to 1 m / 3 ft	1+ m / 3+ ft	2+ m / 6+ ft
Void and delamination detection	•	•	•
Bonding assessment	•	•	•
Thickness measurement		•	•
Honeycombing detection		•	•
Fiber concrete		•	•
Concrete hit prevention			•
Imaging of closely spaced rebars			•

Probe

	Pundit® PD8000 (Multi-channel Ultrasonic Pulse Echo)		
Number of channels	8 (upgrade to 16 available)		
Frequency range	40 kHz (30 - 80 kHz)		
Dimensions / Weight / Storage capacity	240 x 273 x 153 mm (94.5 x 107.5 x 60.2 in) / 3.0 kg (6.6 lbs) / up to 1 TB		
Battery type	Removable pack, 6x AA (NiMH), flight-safe		
IP rating	IP54		
Operating temperature and humidity	-10 to 50 °C (14 to 122 °F) / <95% RH, non-condensing		

Guidelines

Guidelines	RI-ZFP-TU, FCC Part 15: 2010, Class A Digital Device, ZTV-ING Teil 5 Tunnelbau, ACI 228.2R-13
------------	---

Display and processing unit

	Any iPad® (min. iOS 10)
CPU	6-core, 64-bit
Screen technology, type, size, and resolution	Liquid® Retina Display, LED-backlit with multi-touch and IPS technology, 7.9" to 12.9", up to 2732 x 2048 pixels and 326 ppi
Weight	Down to 301 g / 10.6 oz
Storage capacity	Up to 1 TB
Connectivity	Wi-Fi® (802.11a/b/g/n), LTE/5G
Positioning	GPS, A-GPS
User interface languages	English, Chinese, German, Japanese, Korean

Accessories

	Ergonomic kit, A.I. positioning tape, Pundit PD8000 battery pack, battery set; Pundit 250 Array only: Battery complete, Quick Charger		
--	--	--	--

Upgrade	Pundit® PD8000 Pro	Pundit® PD8000 Pro	-
Software sourcing option	Purchase	Purchase	Subscription

