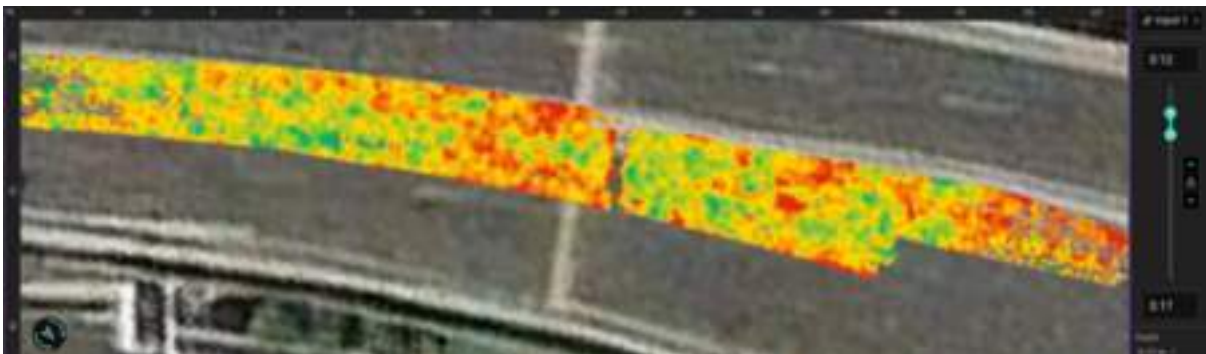
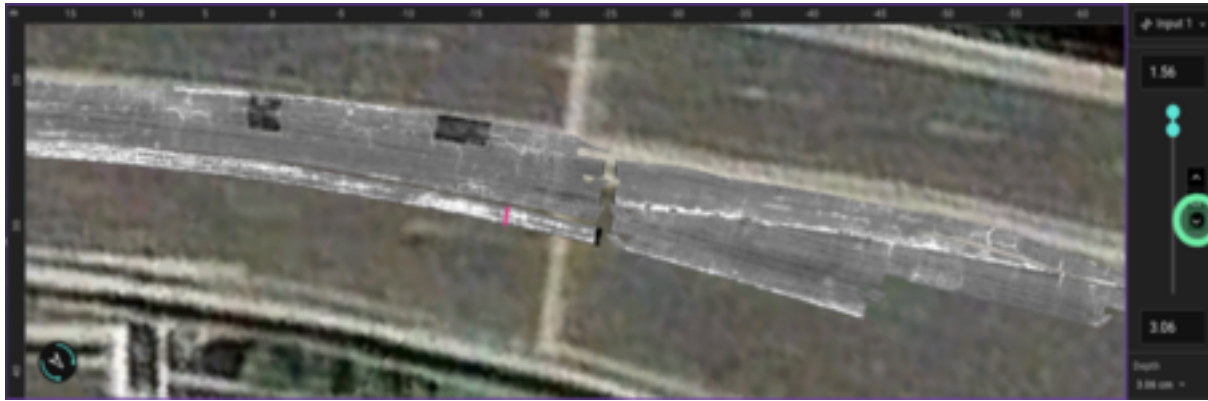




工作人员正推着GS9000探地雷达在桥面上进行探测



GPR 探测结果最重要的输出是劣化图，红色区域为劣化可能性区域，它是基于顶部钢筋的振幅衰减得出，符合 ASTM D6087 标准。



沥青层的主要表面缺陷（裂缝）



在沥青层内 4 至 6 cm 深处发现了延伸的表层缺陷



沥青混凝土 (A/C) 层之间的界面缺陷（分层）



[Terms Of Use](#)
[Website Data Privacy Policy](#)

Copyright © 2024 Screening Eagle Technologies. All rights reserved. The trademarks and logos displayed herein are registered and unregistered trademarks of Screening Eagle Technologies S.A. and/or its affiliates, in Switzerland and certain other countries.