



Figure 1: Site orientation and labeling



Figure 2: Proceq GP8800



Figure 3: PT duct saddle



Figure 4: Saddle positioning in the field



Figure 5: Collecting data

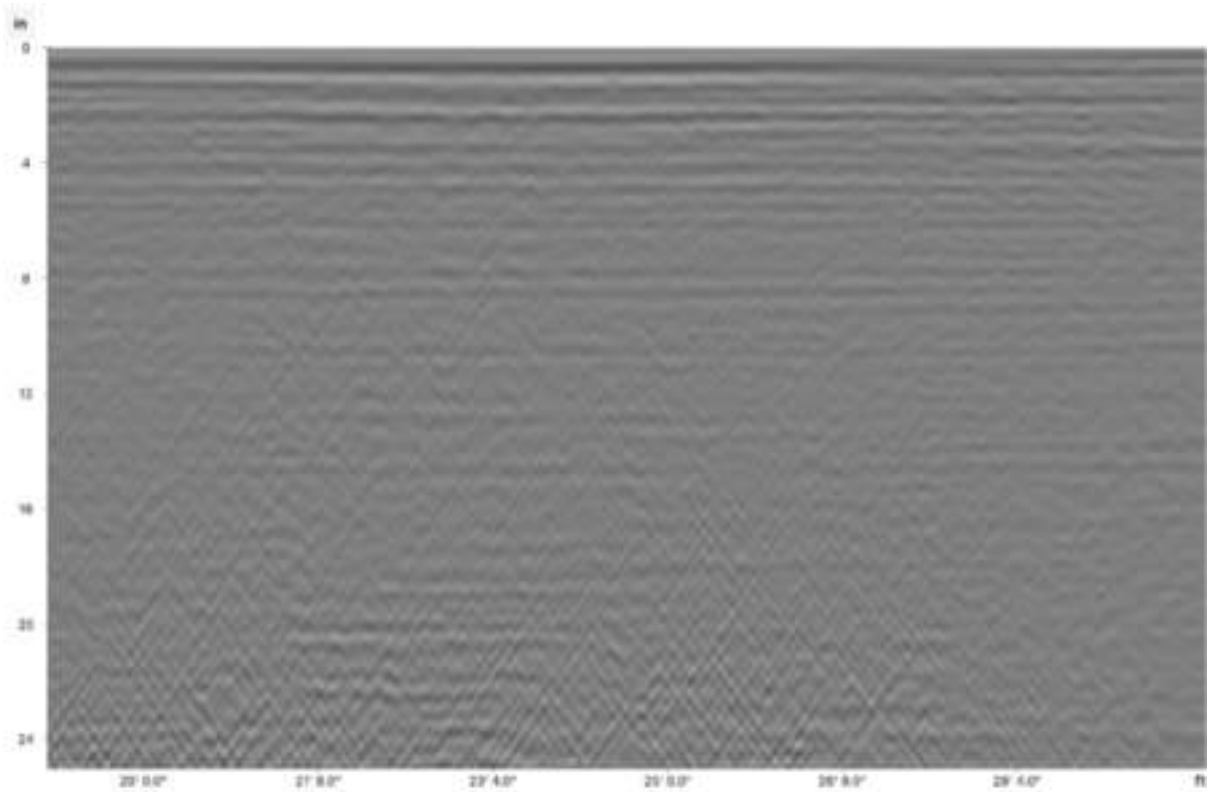


Figure 6: Data collected in the field



Figure 7: Anchorage and welding joints blockers



Figure 8: Obstacles around ducts

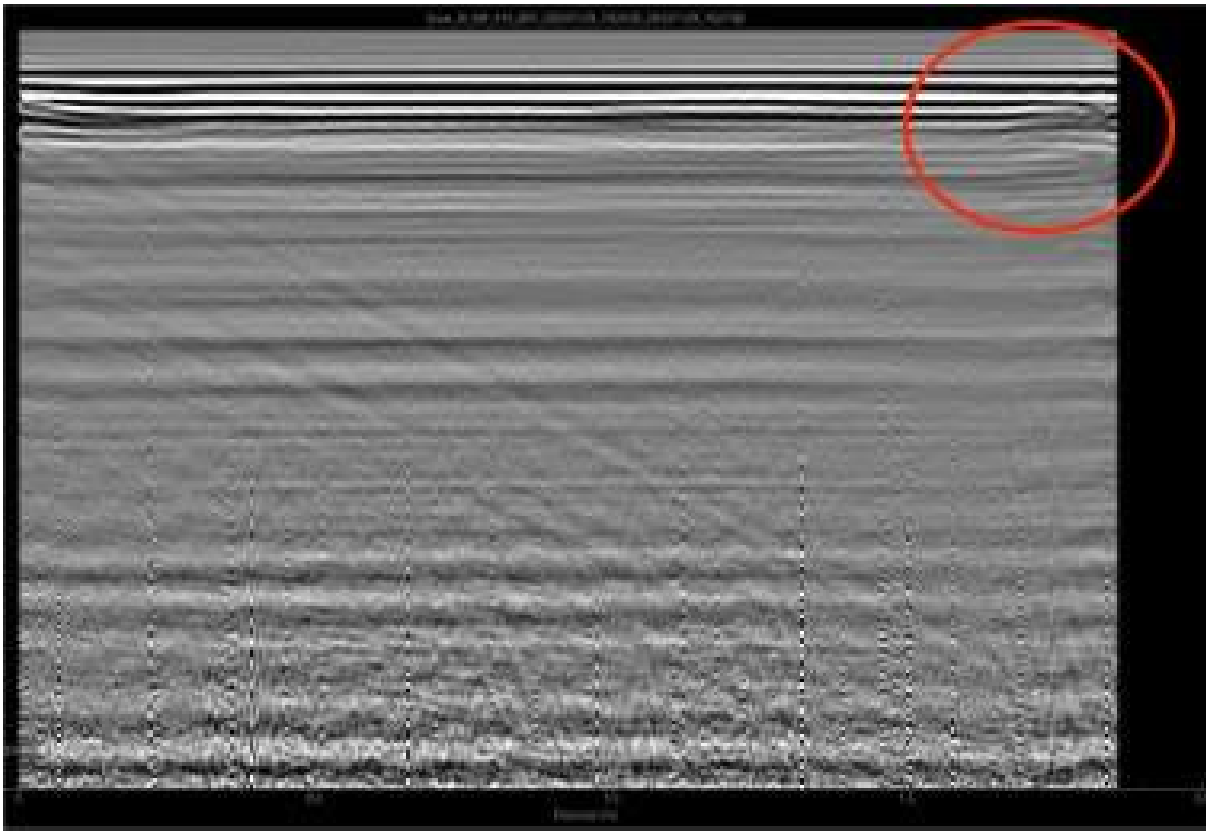


Figure 9: High likelihood of solid filler

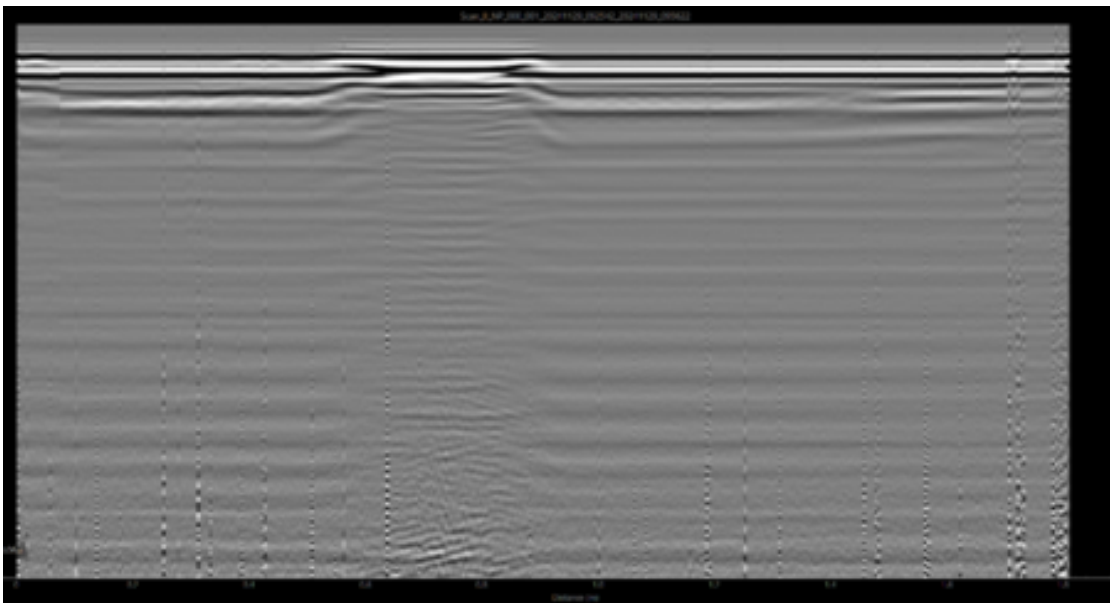


Figure 10: Area of discontinuity indicating a void

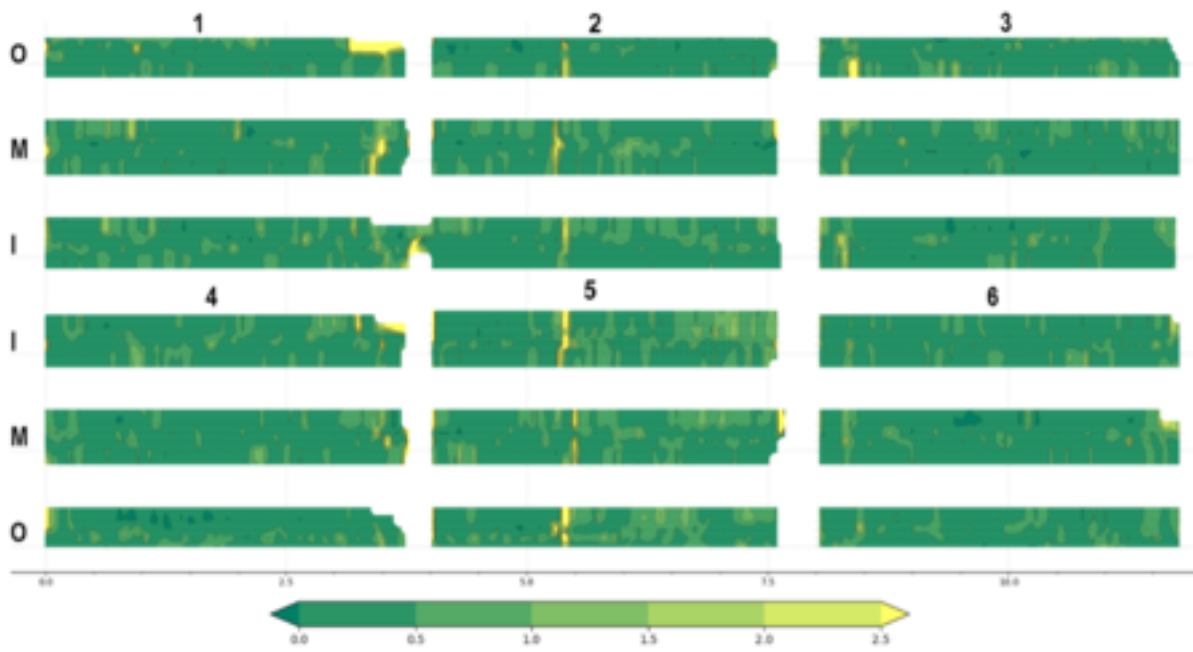


Figure 11: Standard deviation of the duct/filler interface

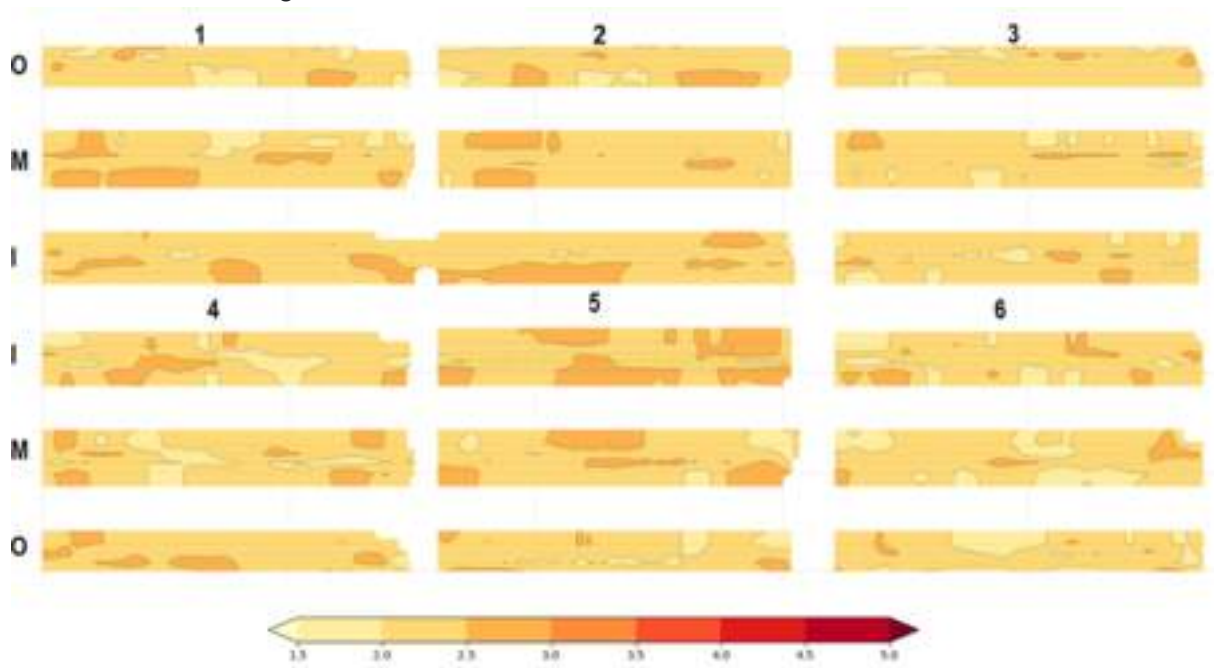


Figure 12: Homogeneity chart of section



[Terms Of Use](#)  
[Website Data Privacy Policy](#)

Copyright © 2024 Screening Eagle Technologies. All rights reserved. The trademarks and logos displayed herein are registered and unregistered trademarks of Screening Eagle Technologies S.A. and/or its affiliates, in Switzerland and certain other countries.